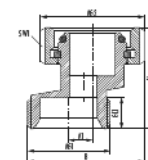


Excenter for connection fitting

Item number 2556341201



Technical data

Connection type 1 (AT1)	Euro cone
Connection type 2 (AT2)	Euro cone
Connection size 1 (AG1)	G 1/2
Connection size 2 (AG2)	G 3/4
A1	7.5 mm
Mounting form	Eccentric
Internal thread (IG)	G 3/4"
Axial dimension (AM)	7,5 mm
Wrench size 1 (SW1)	30 mm
Thread Length 1 (GL1)	12 mm
Length (L)	33.5 mm
Width (B)	33.5 mm
Height (H)	32.6 mm
Material	Nickel-plated brass
Material body	Nickel-plated brass

Excenter for connection fitting

Item number 2556341201

Material body/union nut	Nickel-plated brass
Material union nut	Nickel-plated brass
Material moulded seal	EPDM
Max. operating pressure	10 bar
Max. operating temperature heating	120 °C

Commercial data

Packaging Unit	20
EAN code	4033878105962
Weight	0.075 kg
ETIM 7	EC011010
ETIM 8	EC011010
eCl@ss 10.1	22-56-92-90
Customs tariff number	84819000

Note:

Excenter for connection fitting

Item number 2556341201

Excenter für Anschlussarmaturen Artikel-Nr. 2556343401 / 2556342201

